

INFOCRANK



QUICK START GUIDE



MATERIALS FOR INSTALLATION

Provided

Your chosen bottom bracket kit*

Praxis chainring kit*

navi2coach kit

InfoCrank — including two crank arms with integrated power meters, attached spider and spindle

2 mm hex key

2 x cadence magnets

* Additional tools required. Please see instructions.

Required

Grease

Torque wrench with 3/8" square drive and a nominal 20Nm-70Nm range

8 mm hex key

WELCOME.



**READY TO INSTALL
THE INFOCRANK?**





REMOVE THE EXISTING BOTTOM BRACKET (BB)*



The first step is to prepare your bike's bottom bracket (BB). Remove existing bearings and circlips, taking care not to damage bicycle's bottom bracket shell. For PressFit BBs, this is best done using a special tool.

If you're not sure you can do this, we suggest you ask a professional bike mechanic to do it.

* Additional tools may be required.

2



INSTALL THE PRAXIS BB*

You will have ordered and received one of three BBs with your InfoCrank; BB30, PF30 or English Threaded (BSA).

Download the specific BB installation instructions from the Verve Cycling website and follow them closely to fit your new BB.

Once you have installed the BB, the bike is ready to fit your InfoCrank.

Provided:

2 x Praxis BB cup tools

*Additional tools may be required. Please refer to your specific BB instructions.

3



FIT CHAINRING SET TO INFOCRANK*



Your InfoCrank includes a set of Praxis chainrings and installation instructions. Follow these instructions closely to install the chainrings on the RH InfoCrank (the 'spider').

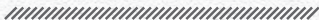
Set aside.

* Additional tools required. Please refer to your chainring instructions.

4



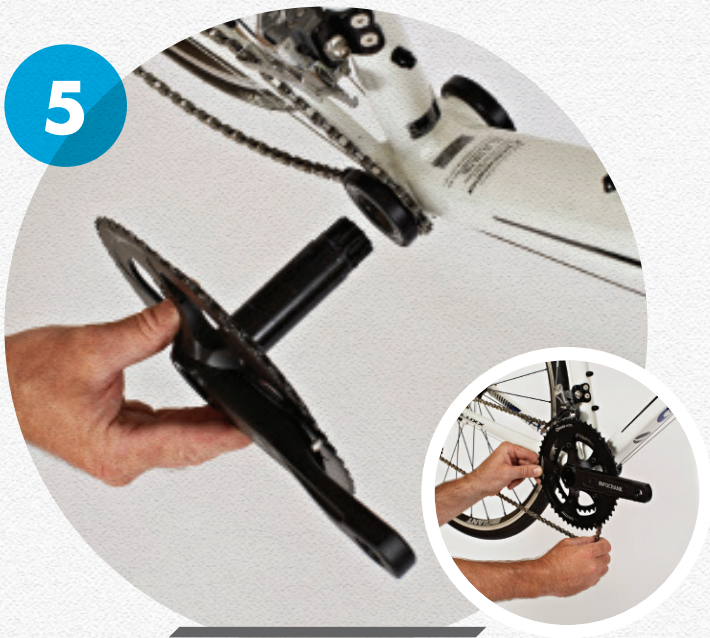
INSTALL CADENCE MAGNETS



Slide a magnet hanger over each BB cup. Angle the magnet at 5 o'clock on the Non-Drive Side (L) and 7 o'clock on the Drive Side (R) for optimum results. Both magnets should angle towards the back of the bike as far as possible.

Tighten the magnet hanger using the grub screws.

5



OFFER UP RH CRANK/RING ASSEMBLY



Lightly grease the spindle, spline of the RH crank, and the Non-Drive Side (L) lock bolt.

From the right-hand side, insert the spindle of the RH crank into the bottom bracket bearing. Rest the chain on the bracket shell or hold it clear by hand, so as not to disturb the magnet hanger. Slide the crank all the way in, then rest the chain on the inner chainring.

Additional tools required:

Grease



FIT THE DUST COVER



Fit the dust cover over the Non-Drive (L) bearing with the smaller-diameter alloy flange against the bearing.



FIT LH CRANK & FINISH CRANKSET INSTALLATION



From the left-hand side, slide the Non-Drive Side (L) crank over the protruding spindle of the Drive Side crank, using an 8 mm hex key to aid engagement. Rotate the crank arm clockwise and hand tighten to a point just before it stops on the end of the spindle.

Align the Non-Drive Side crank at 180 degrees to the Drive Side crank. (If the RH crank is at 12 o'clock, the LH crank is at 6 o'clock).

Slowly tighten the crank arm bolt, while aligning the splines to start the engagement. Once the splines are aligned, tighten the bolt to the torque value indicated on the crank arm.

Additional tools required:

8 mm hex key

Torque wrench with 3/8" square drive and a nominal 20Nm – 70Nm range

8



WAKE UP THE INFOCRANK



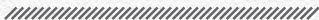
It's now time to make your power meter come to life. Rotate the cranks a full rotation. The LED light in the battery cover will blink every time it goes past your cadence magnet. Check that you can see a light on both crank arms.*

*If you can't see a light on both sides, please follow the diagnostic steps on our website, or check the 'Need to change the batteries?' booklet for more information.

9



MEET YOUR NAVI2COACH



Unbox and follow your instructions to install your navi2coach onto your bike. If you have an alternative bike computer you prefer to use, as long as it's ANT+™ enabled you will be able to pair it with your InfoCrank.

10



FIND YOUR BIKE COMPUTER



All ANT+™ devices are “paired” the same way with power meters. Ensure you are away from other bikes, and follow the instructions from your bike computer to pair with a power meter.

Once you have enabled your bike computer to find a power meter, a full rotation of the crank arms should allow it to locate your InfoCrank.

Note: if you need to find InfoCrank manually, the last four digits of your serial number are your device code. You should be able to correlate these numbers with your bike computer when paired correctly.

11



CHAIN LINE*



Check/re-adjust your front derailleur stops after you've installed your new Praxis Chainrings and InfoCrank.

If you do not feel positive about the set up of the chainrings and your front derailleur, please take your bike to your local bike shop or Verve Affiliate for assistance.

* Additional tools may be required.

12



RIDE AWAY!



It's time to enjoy riding on your InfoCranks. Make sure you set your computer to show you right and left leg balance, if your bike computer has it, and start spinning!

Notes

Please read these instructions carefully before trying to install InfoCrank. Installing a bottom bracket correctly is essential to the overall function of your bike and InfoCrank. Be sure to follow all the steps closely.

Learn more

All manuals are available on our website. If you're unsure of the correct procedure to install the InfoCrank, please ask us and we will gladly connect you to a qualified Affiliate close to you.

Support

If you have any questions, we are here to help. Go to our Support page or email us at support@vervecycling.com



VERVE CYCLING

© 2014 Tough Torque Limited trading as Verve Cycling. All rights reserved.

The InfoCrank logo is a registered trademark of Tough Torque Limited trading as Verve Cycling.

The ANT+ logo is registered trademark of Dynastream Innovations Inc.

The Praxis Works logo is a registered trademark of Praxis Cycle, LLC.

The navi2coach logo is a registered trademark of o_synce Europe GmbH.

Photography by Sabine Albers Photography | Graphic Design by amymoffatt.com