

## **Firmware Updating Tool 0.206 September 2017**

### **Ubuntu Users - Preparing the ANT USB-m Modules**

Ubuntu detects the ANT USB-m as a SUUNTO Converter and loads the incompatible `usb_serial_simple` driver module. To prevent the module loading, edit `/etc/modprobe.d/blacklist.conf`:

```
sudo nano /etc/modprobe.d/blacklist.conf
<Add these lines to the end of the document>
# Prevent ANT USB-m being detected as SUUNTO Converter
blacklist usb_serial_simple
<Save the file with ^o>
<Exit nano with ^x>
```

### **Enable User Access to the ANT USB-m**

To enable user access to the ANT USB-m, copy the included file `20-antstick.rules` to `/etc/udev/rules.d/20-antstick.rules`:

```
sudo cp 20-antstick.rules /etc/udev/rules.d/.
```

### **Additional Packages**

Depending upon your linux distribution, some packages may not be installed by default. The program will fail with a message indicating which shared object could not be loaded. The following list of dependencies should help determine which package must be installed:

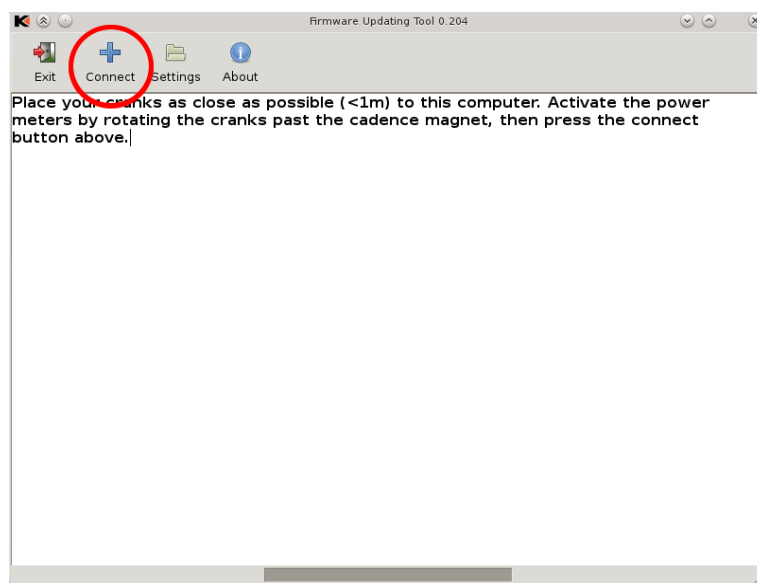
```
libatk1.0-0
libffi5
libgtk-3-0
libpcre3
libpixmap-1-0
libselinux1
libsm6
libstdc++6
libtiff5
libusb-1.0-0
libxau6
libxcb-render0
libxcb-shm0
libxdmcp6
libxrender1
```

### **Updating the Power Meter Firmware**

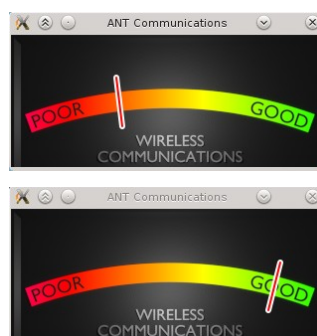
1. Plug the ANT USB-m



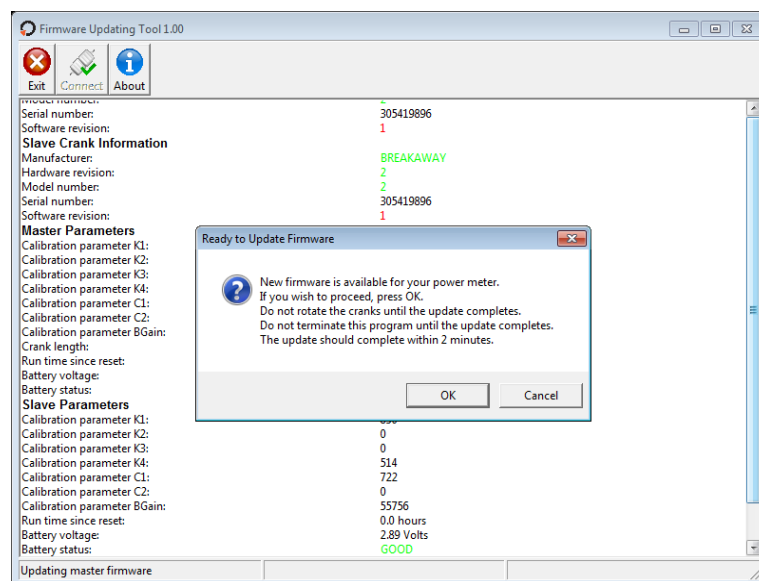
2. Place the bike close to the computer.
3. If magnets are installed, rotate the cranks to turn on the power meters.
4. If magnet free, apply load to each pedal to turn on the power meters.
5. Run the firmwareUpdater.
6. Press the Connect button to connect to the power meter:



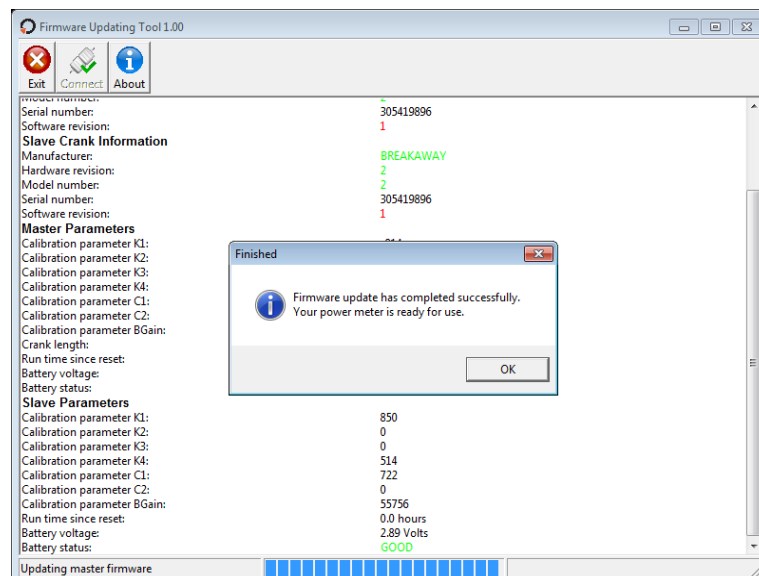
7. Follow the prompts. Most prompts will clear automatically when the error is fixed.
8. If the communications meter shows poor, try repositioning the ANT Stick to achieve good.



9. The updating tool will find the power meter. If an update is available, you will be prompted to proceed. Select OK if you wish to update the firmware on the power meter:

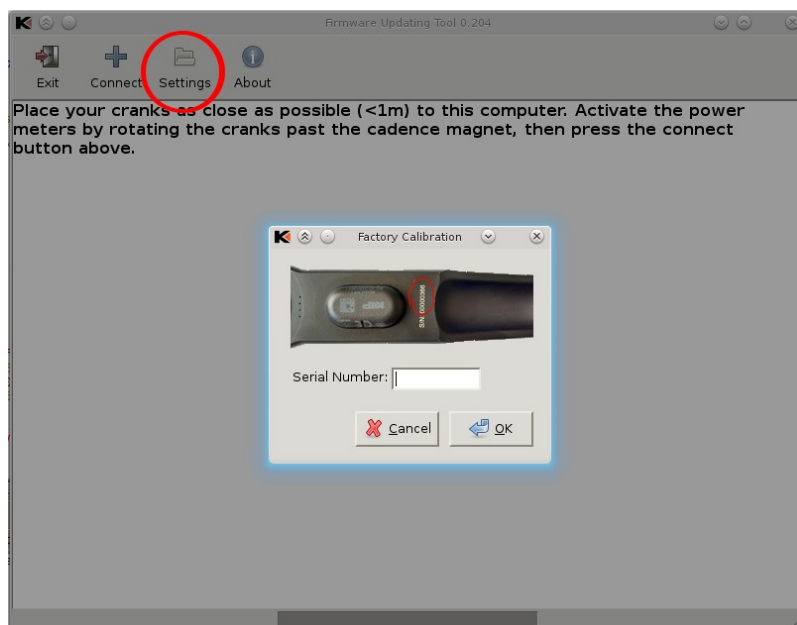


10. The update will take approximately 5 minutes. Follow the prompts:



## Restoring the Factory Calibration or Recovering a Non-Responsive Crank

1. Before pressing the connect button, press the settings button.
2. In the dialog, enter the numeric part of the serial number as printed on the back of the crank. You don't have to enter the leading 0s.



3. Remove the battery covers from both cranks.
4. Press connect. Wait until you receive the message "Power Meter Not Found".
5. On the drive side crank, hold the magnet against the rear cover opposite the light. Install the batteries and wait for the light to blink rapidly. Remove the magnet.
6. The update should start. Wait for the drive side crank to update and the "Power Meter Not Found" message to reappear.
7. On the non-drive side crank, hold the magnet against the rear cover opposite the light. Install the batteries and wait for the light to blink rapidly. Remove the magnet.
8. The update should start. Wait for the non-drive side crank to update.
9. The crank parameters should display and the dialog "Up To Date" will appear. Press the Cancel button.
10. The factory restore is now complete.
11. It is recommended to zeroing the cranks following a factory reset.